

VIEWS FROM THE TOP

JANUARY
9th, 2014



Supporting Partner

28 Years of Business Insights from the Highest Level

Thursday, January 9, 2014, Cherokee Town & Country Club

AGENDA:

6:30 am - 7:30 am: Registration, Networking & Breakfast

7:30 am - 8:15 am: E.J. Burke: National Mortgage Bankers Association 2014 Views

8:15 am - 9:30 am: Panel Discussion: The Central City's Potential in a Growing Region, Moderated by Maria Saporta

9:30 am - 10:30 am: Dr. Sam Chandan: From Recovery to Expansion

[Online Registration Open](#)

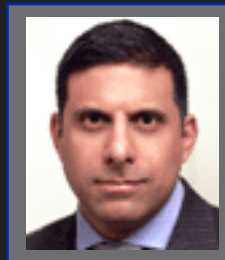
Speakers

Keynote Speaker



E.J. Burke
*Chairman, Mortgage Bankers Association
Executive Vice President &
Head of KeyBank Real Estate Capital
and Corporate Banking*

Featured Speaker



Dr. Sam Chandan
*President & Chief Economist
Chandan Economics
Professor in the Associated Faculty
Wharton School, University of Pennsylvania*

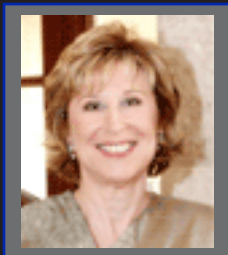
Panel Discussion: The Central City's Potential in a Growing Region



Egbert Perry
*Chairman and CEO, Integral
Chairman of the Board of
Central Atlanta Progress*



A.J. Robinson
*President, Central Atlanta Progress
and Atlanta Downtown Improvement
District*



Penelope McPhee
*President & Trustee
The Authur M. Blank Foundation*



Larry Gellerstedt
*President & CEO
Cousins Properties*



Maria Saporta
*Moderator
Columnist, Atlanta Business Chronicle
Founder/Editor, SaportaReport*

RSVP Today

Online Registration Open

Individual Tickets: \$75

Reserved Table for 10: \$650



REIAC Member Price: \$65

REIAC Members receive a \$10 discount,
but must register online to receive the
reduced price.

Pay online with Visa, Mastercard or American Express

Cherokee Town & Country Club

155 West Paces Ferry Rd, NW

Atlanta, GA 30305

(404) 365-1200

[Click for directions](#)

Sponsors

Premier Sponsors



**TROUTMAN
SANDERS**
ATTORNEYS AT LAW

Sponsors

Beech Street Capital
Centerline Capital Group
NAI Brannen Goddard

Contributors

IDI
Jackson Corporate Real Estate
KeyBank
Transwestern

Sponsorship Opportunities Available

Contact: John Beam Jr., jbeam@centerline.com or (404) 921-2555